

# HiPerformance Builders



COASTAL ELEVATION

## THE MULBERRY

- 1st Floor - 1,104 Sq. Ft.
- 2nd Floor - 453 Unfinished Sq. Ft.
- Total Finished Area - 1,104 Sq. Ft.

Shown with optional exterior features.

*The Mainstreet Collection*

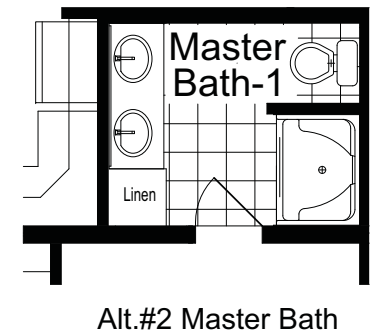
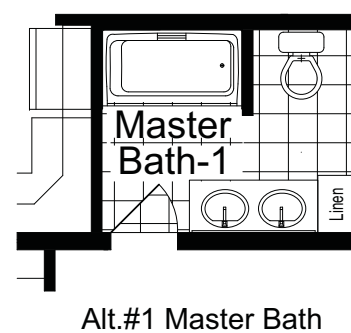
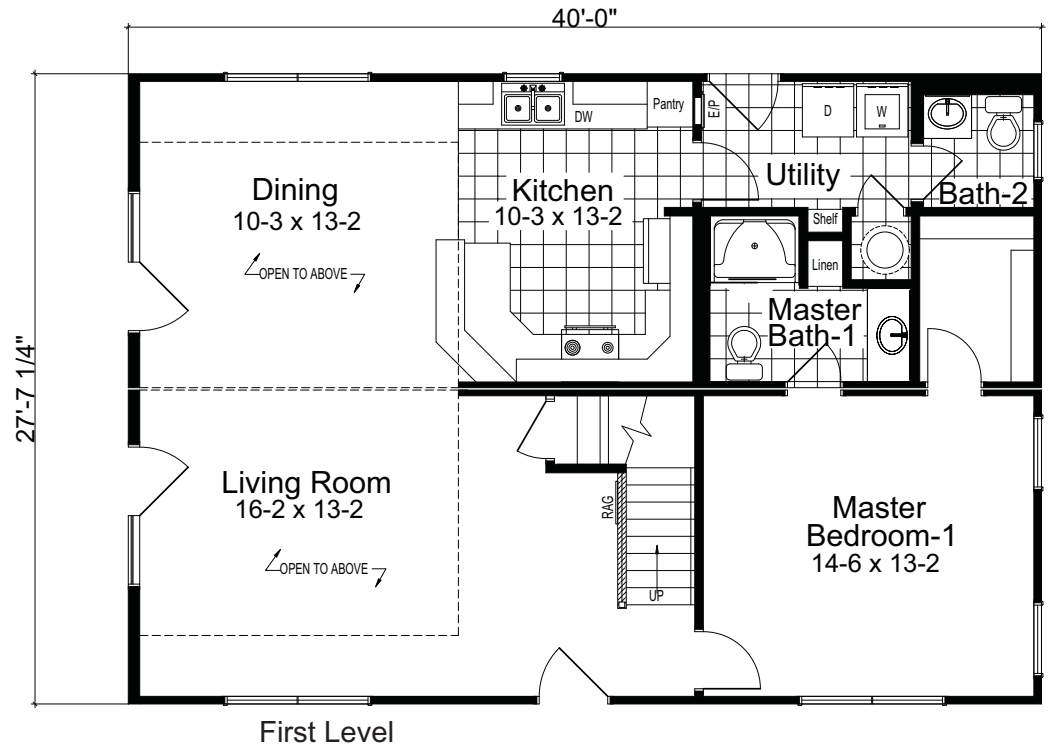
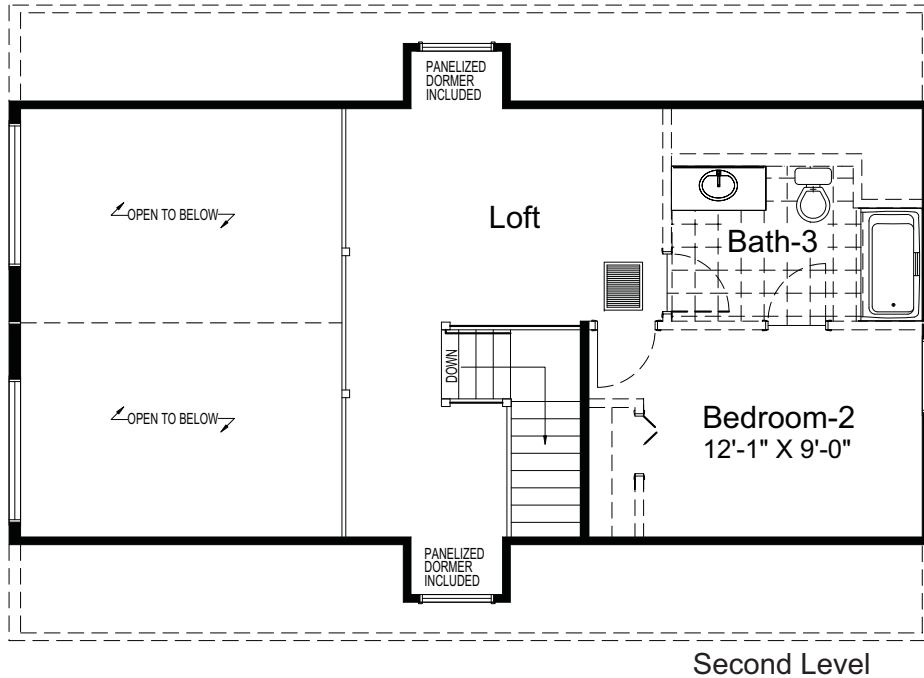
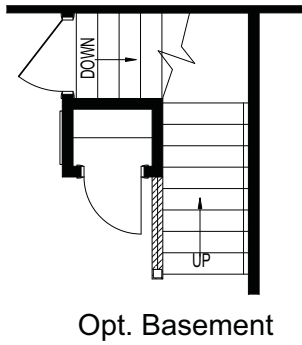
These are artist renditions for sales purposes only.  
Refer to working drawings for actual dimensions.  
© 2010 Nationwide Homes 3/30/10

**NATIONWIDE**  
*Homes*

1100 Rives Road • P.O. Box 5511  
Martinsville, Virginia 24115  
Phone: (276) 632-7100  
Fax: (276) 666-2537

[www.nationwide-homes.com](http://www.nationwide-homes.com)

# THE MULBERRY



Changes to the Mainstreet Collection are not permitted except for published options.