

HiPerformance Builders



Copyright © 2011 Nationwide Homes. All rights reserved.

Shown with optional exterior features

GULFPORT

- Total Finished Area - 1,375 Sq. Ft.
Dimensions: 27'8"W x 52'0"D

Renew Avenue

COLLECTION

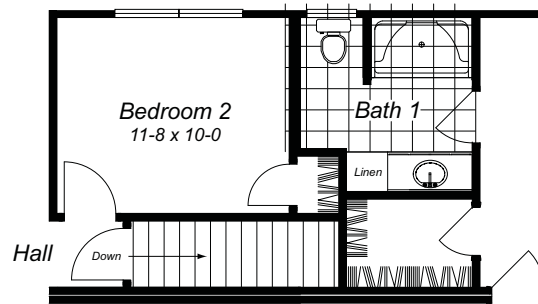
These are artist renderings for sales purposes only.
Refer to working drawings for actual dimensions.
© 2011 Nationwide Homes 3/18/11

NATIONWIDE
Homes

1100 Rives Road • P.O. Box 5511
Martinsville, Virginia 24115
Phone: (276) 632-7100

www.nationwide-homes.com

GULFPORT



Alternate Basement