

HiPerformance Builders



Shown with optional exterior features.

THE BIRMINGHAM

1st Floor - 1,947 Sq. Ft.

2nd Floor - 597 Sq. Ft. (additional 157 sq. ft. with office, additional 172 sq. ft. with bonus room)

Total Finished Area - 2,544 Sq. Ft.

The Legacy Collection

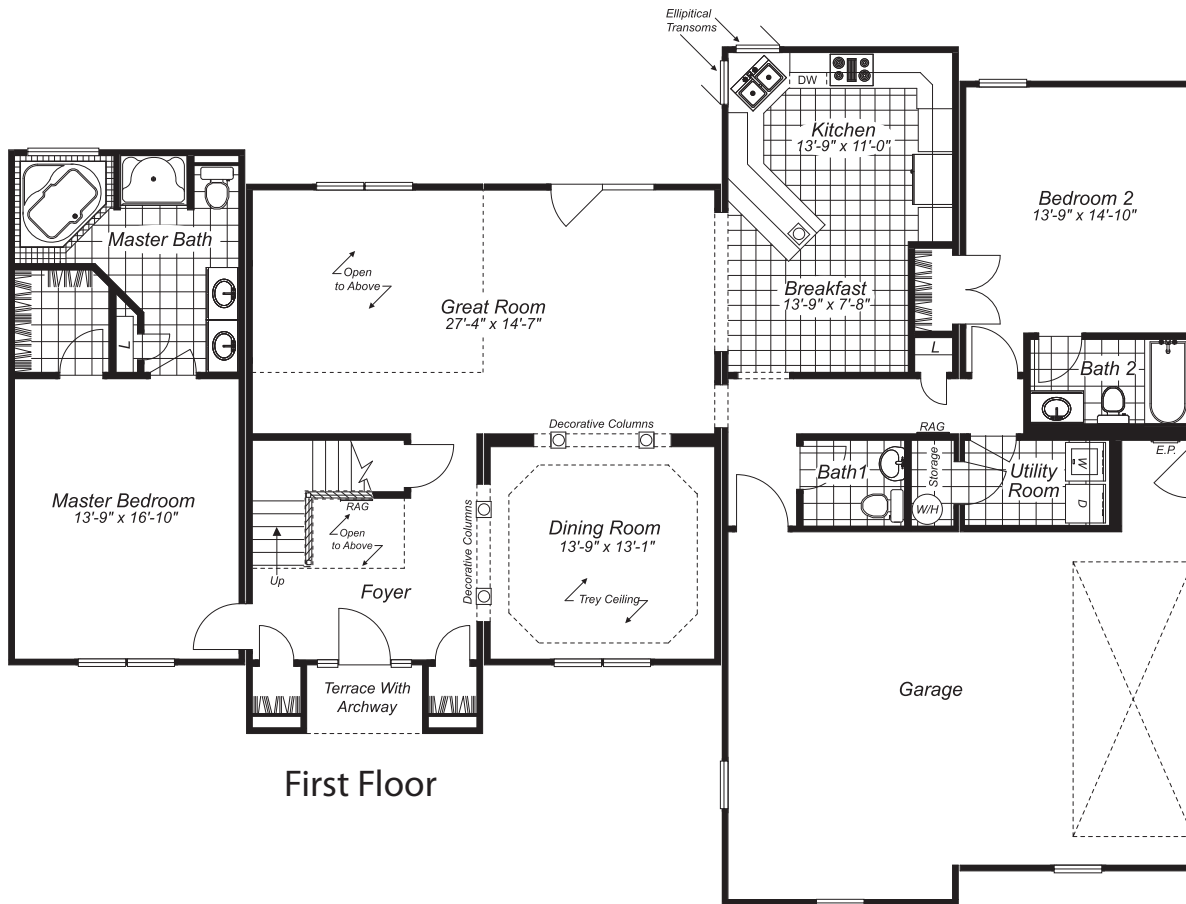
These are artist renderings for sales purposes only.
Refer to working drawings for actual dimensions.
© 2011 Nationwide Homes 4/18/11

NATIONWIDE
Homes

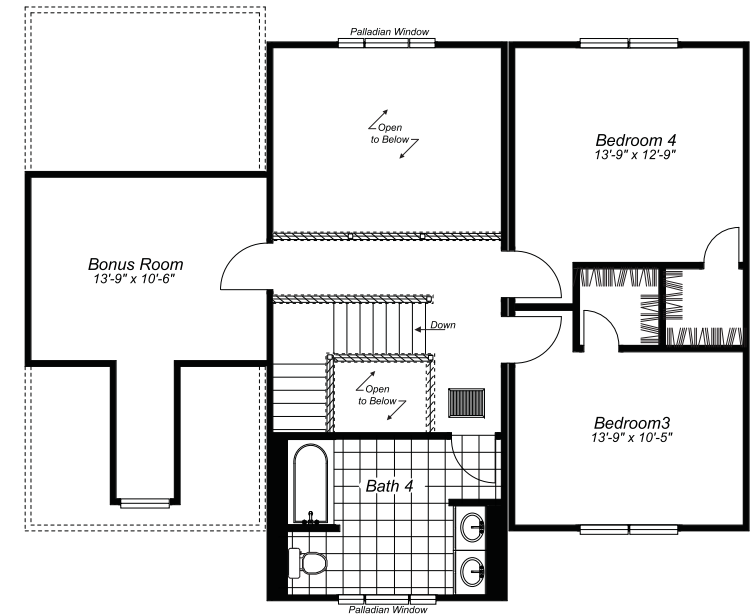
1100 Rives Road • P.O. Box 5511
Martinsville, Virginia 24115
Phone: (276) 632-7100

www.nationwide-homes.com

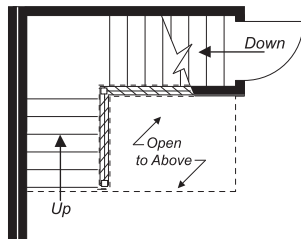
THE BIRMINGHAM



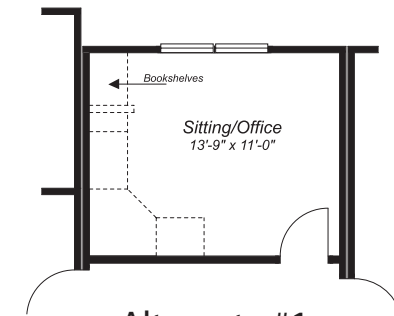
First Floor



Second Floor



Opt. Basement



Alternate #1